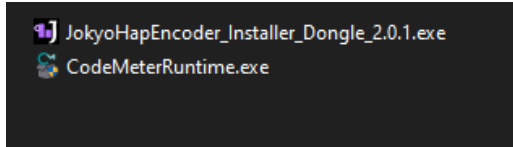


# How to license Dongle Version Windows

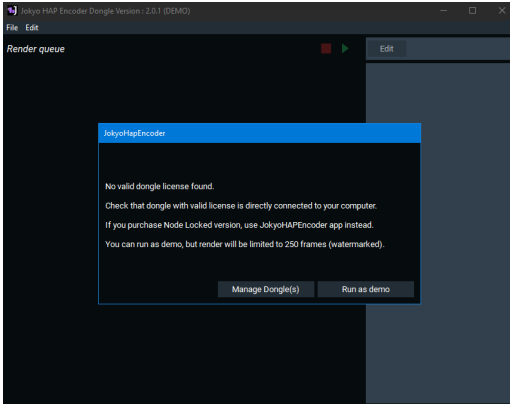
This documentation explains the licensing process for **Jokyo HAP Standalone Dongle Version**

If you purchase Jokyo HAP Encoder Standalone Node Locked Version, use the How To License Dongle Version Windows Instead.

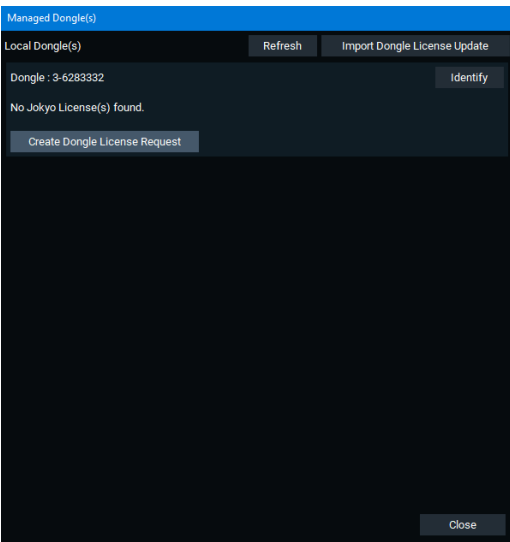
Dongle version installer can be download in the Jokyo HAP Encoder Dongle Download version web page :



- Install Dongle driver (CodeMeterRuntime.exe) if you don't have it yet
- Physically connect a Wibu Key Dongle on your computer



Open **Jokyo HAP Encoder** app.  
Click **Managed Dongle(s)** button



You will see all connected dongles.

If you don't see your dongle, check

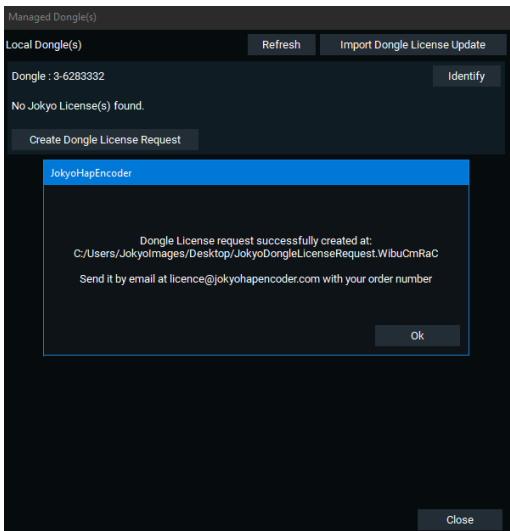
- Code Meter Runtime have been installed
- you physically connect a wibu key dongle on your computer

If multiple dongle is connected, you can identify each one, by clicking on **"Identify"** button (if dongle have a LED, it will become red than green)

Click on **"Create a dongle request license file"** for the dongle you want to use

**Important note :** Be sure to select the right dongle to create this file, Dongle license is link to a specific dongle, and can't be used for another dongle.

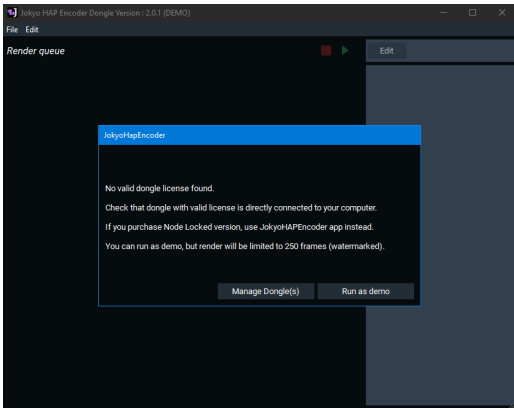
**In case of bundle purchase :** the dongle request file need to be only made one time, to received license for all products of the bundle on a dedicated dongle (don't need to create one by product).



Send this file to [licence@jokyoencoder.com](mailto:licence@jokyoencoder.com) with your order number.

It can take up to 2 working days for the license to be created (license generation is a manual process on our side (we are most of the time In GMT +2 timezone)).

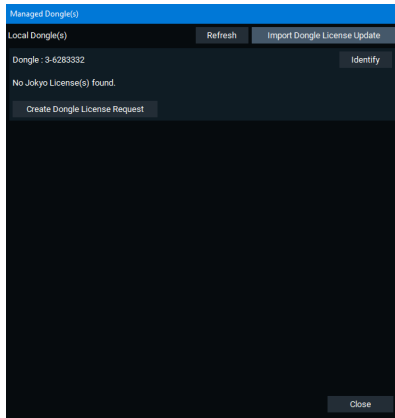
You will then received an Dongle Update file by email.



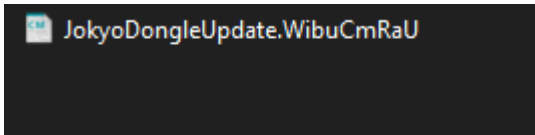
Open **JokyoHAPEncoder** app.

Connect the dongle your originally use to create the dongle request file on your computer

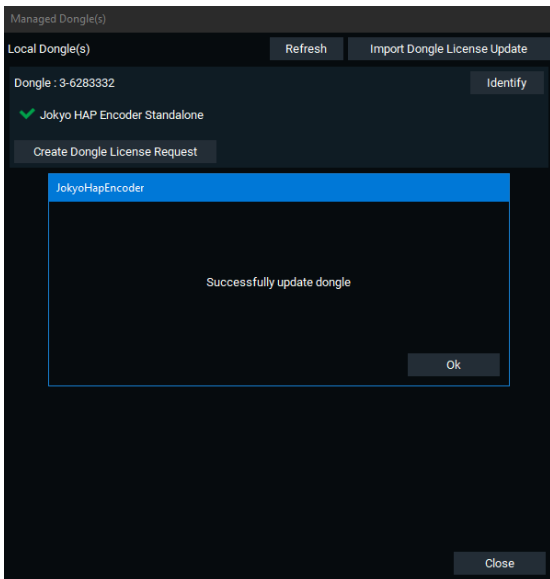
Click on **“Managed Dongle(s)”**.



Click on **“Import update license file”**



Select the file **JokyoDongleUpdate.WibuCmRaU** you received by email.



You will then see the license state of your dongle.

Restart the **Jokyo HAP Encoder** app.

To use **Jokyo HAP Encoder Standalone** without demo limitation, you will need to keep dongle physically connected to the computer